

# cronus Colour concept

cronus captivates with its variety of colours and **combination possibilities**. The selection is nearly boundless. Even **special colours** and individual **digital prints** are available on request.

## Panels and doors made of HPL:



**Traffic white 9317**  
similar to NCS S 0502-G50Y



**Granite white 9317P**



**Light grey 7208**  
similar to NCS S 2500-N



**Quartz grey 7708**  
similar to NCS S 5000-N



**Graphite 7808**  
similar to NCS S 7502-B



**Cappuccino 1117**  
similar to NCS S 3010-Y60R



**Burano brown 8617**  
similar to NCS S 6010-Y30R



**Corn yellow 1708**  
similar to NCS S 1070-Y10R



**Orange 2717**  
similar to NCS S 0570-Y40R



**Tornado red 3508**  
similar to NCS S 0580-Y90R



**Garnet red 3708**  
similar to NCS S 3060-R



**Pacific blue 5715**  
similar to NCS S 2060-R90B



**Lagoon blue 5408**  
similar to NCS S 1030-R90B



**Silver 7408**



**Lemon green 6715**  
similar to NCS S 1060-G60Y

## Panels and doors made of TSG:



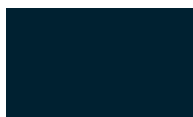
**Traffic white 9317<sup>1</sup>**  
similar to RAL 9016



**Light grey 7208**  
similar to RAL 7035



**Anthracite 7603**  
similar to NCS S 5502-Y



**Dark blue 5603**  
similar to RAL 5008



**Light blue 5203**  
similar to RAL 6034



**White green 6504**  
similar to RAL 6019



**White yellow 1503**  
similar to NCS S 1020-Y



**Light yellow 1403**  
similar to NCS S 0560-Y10R



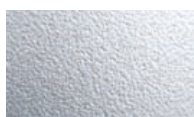
**Pale red 3303**  
similar to RAL 2012



**Red 3117**  
similar to RAL 3013

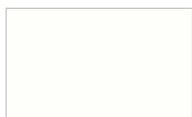


**Dark red 3603**  
ähnlich NCS S 5040-R



**Structure SR200<sup>2</sup>**

## Profiles, hinges, furniture, supporting legs and accessories:



**White 02<sup>3</sup>**  
similar to RAL 9016



**Manhattan 05<sup>3</sup>**  
similar to NCS 2801-Y36R



**Anthracite 03<sup>3</sup>**  
similar to RAL 7043



**Dark blue 04<sup>3</sup>**  
similar to RAL 5003



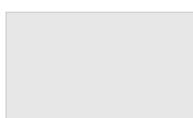
**Red 11<sup>3</sup>**  
similar to RAL 3003



**Dark red 01<sup>3</sup>**  
similar to RAL 3005



**Yellow 10<sup>3</sup>**  
similar to RAL 1023



**Satin anodised 08**  
similar to E6/ EV1



**Stainless steel V2A 12<sup>4</sup>**

**Colour concept  
valid from 07/2017**

<sup>1</sup> For a surcharge also available in optiwhite (decoloured glass)

<sup>2</sup> Patterned glass, transparent, only available for doors

<sup>3</sup> Profiles for glass cubicle only available in satin anodised 08

<sup>4</sup> For accessories and supporting legs only

Please note, that the colours shown above may slightly differ from the original colour due to typographic reasons. We would gladly advise you personally.