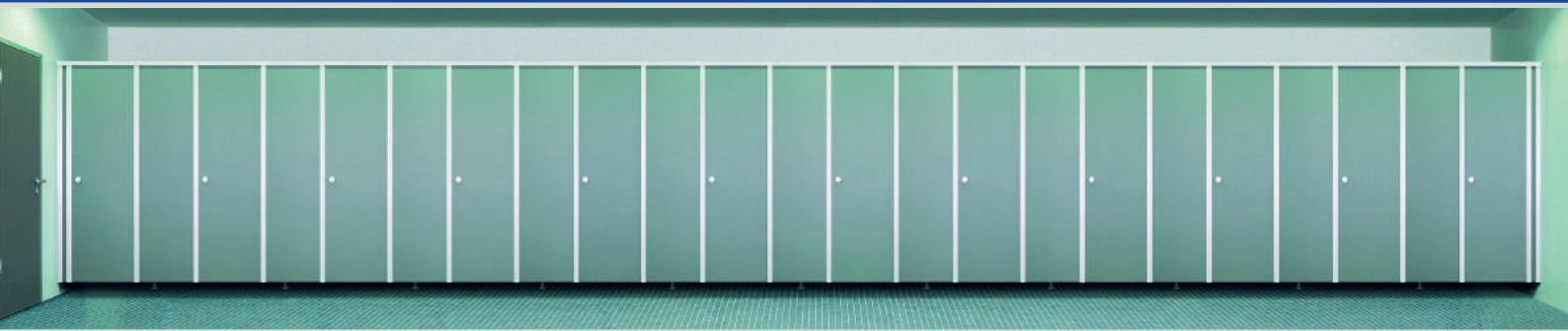




**cronus® | cubicle system**



<b>cronus uncompromising - the cubicle system</b> .....	page 3
<b>cronus versatile - possible applications</b> .....	page 4
<b>cronus visual - more than design</b> .....	page 5
<b>cronus private- floor-to-ceiling</b> .....	page 6
<b>cronus intelligent – support-optimised and front-suspended</b> .....	page 7
<b>cronus water resistant - the wet area solution</b> .....	page 8
<b>cronus premium – the glass solution</b> .....	page 9
<b>cronus unconventional - transverse cubicles and special solutions</b> .....	page 10
<b>cronus luminous - lighting element</b> .....	page 10
<b>cronus pointing the way - accessories and engravings</b> .....	page 11
<b>cronus extended - complementary products</b> .....	page 11
<b>cronus profiled - quality in details</b> .....	page 12
<b>cronus specifics - planning aids</b> .....	page 13
<b>cronus vivid - colour concept</b> .....	page 14
<b>KEMMLIT – ten good reasons</b> .....	page 15



**cronus® | uncompromising**  
the cubicle system

The cubicle system cronus is predestined for individual projects. It is versatile and flexible without abandoning its own distinctive line. cronus offers aesthetically sophisticated solutions in the highest quality. Every detail is designed for maximum variance, perfection in form, ageless design and durability. cronus combines design, quality and flexibility – without compromises!





## **cronus®** | versatile

### possible applications



Especially in public-commercial sanitary facilities, constructional and utilisation requirements differ greatly. Therefore, flexible product solutions for absolute creative freedom are necessary.

KEMMLIT's decades of experience with individual projects has been incorporated in the development of cronus. This has made it possible to implement special ideas and solutions for each customer group – optimised by complementary KEMMLIT products and accessories to a perfect combination in terms of colour, shape and material.

When it comes to planning and design, cronus offers a large scope of possibilities. Like a tailor-made suit, cronus evolves in individual projects – height, width, length customised and optimised in accordance with the room layout.

#### **The versatile application areas of cronus:**

- industrial and commercial buildings
- administration and public authorities
- public facilities
- swimming pools
- saunas and spas
- fitness, sports facilities and stadiums
- camping sites and amusement parks
- hotels and catering industry
- schools and universities
- hospitals and clinics
- rehabilitation centres and health resorts



## **cronus®** | **visual**

**more than design**

Architects and planner always visualise the overall picture – a uniform and consistent line for a well-balanced room concept. cronus gives architects, planners as well as craftsmen but especially builders new perspectives. The smooth surfaced cubicle system with the linear profiles and perfect technical details is inconspicuous but nevertheless distinctive!





**cronus® | private**  
floor-to-ceiling



Panels and doors are closed from floor to ceiling for an ideal sense of privacy. Whether the upper panel is made of HPL, glass or plexiglass – it is produced and installed true-to-size!

The maintenance-free door hinges have an integrated spring and therefore provide automatically closing doors. Due to the integrated rubber buffer in the door stop profiles this happens gently and almost silently.





## **cronus®** | intelligent

### support-optimised and front-suspended

Intelligence instead of quantity – it is not the number of supporting legs that is crucial for the stability and durability of a cubicle system, but their ideal positioning in conjunction with the solid fastening.

Support-optimised and front-suspended – this is the innovative cronussolution with integrated supporting legs in the partition panels. Invisible to the observer, visually perfect and easy to clean.

If that's not enough, the suspended cronus system, in combination with the KEMMLIT suspended head rail construction in a variety of different designs, offers the possibility to realise a cubicle system without supporting legs. Drillings in the floor can be dispensed with.

Support-optimised and front-suspended or suspended system – both solutions are technically sophisticated, beautifully shaped and cater for cost-reducing floor maintenance. Ideal for all strongly frequented sanitary facilities.





## **cronus®** | water resistant

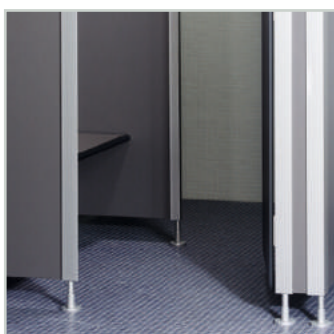
### the wet area solution

cronus is ideally suited for dry, humid and wet areas – from extensive shower cubicles, changing cubicles or other cubicle systems for indoor and outdoor swimming pools, leisure and rehabilitation centres and health resorts, saunas and spas – to single shower cubicles and changing cubicles on camping sites, fitness centres and motorway service areas.

The panels of cronus NR are made of a well-proven solid grade material: High Pressure Laminate. In addition to the coloured layer, a special overlay protects the surface of the panel against abrasion, wear and scratches and provides a grip-friendly surface. Doors can optionally be made out of HPL, safety glass or seawater-proof aluminium.

The uniqueness of the construction is the static connection of the robust aluminium profiles, making this cubicle system durable and extremely sturdy.

All materials have excellent characteristics even in extreme humidity and for utmost demands regarding hygiene. They are resistant to ultraviolet light, heat and water as well as mildew retardant. They are low-maintenance and easy to clean.







## **cronus® | premium** the glass solution

For some years now, the material glass has gained importance in project planning and creative design of sanitary facilities. The varied possibilities, which result from modern manufacturing methods and processing technologies, leave nothing to be desired.

Despite the immense creative freedom and the sophisticated design, one does not have to abandon functionality to apply the glass cubicle system cronus GL. The easy to clean toughened safety glass exceeds all expectations regarding hygiene and stability. In addition it brings about spectacular effects in combination with light and colour.

Basis of the glass version is the supporting construction made of satin anodised aluminium profiles to hold the cubicle elements made of toughened safety glass with increased bending strength, increased resistance to shock and impact as well as increased resistance to temperature changes. The result is a long-lasting and solid cubicle system made of glass – simply all around safe!

The glass elements are printed with ceramic colours in a special silk screen process and in an additional refinement process enamelled or annealed.

The system is ideally suitable for demanding builders, designers and planners, who wish to combine the quality of glass with their own style. The various possibilities with cronus glass establishes new dimensions of designing sanitary facilities, such as in spas and wellness centres, hotels and restaurants, upscale administration offices as well as prestigious public or commercial buildings.



## **cronus®** | individual

### transverse cubicles and special solutions

New freedom in planning sanitary facilities. Even in challenging room layouts cronus offers elegant solutions with ideal proportions. Special heights and widths, unusually shaped cubicles and combinations, cut-outs and angular wall connection as well as special colour requests are no problem with cronus.



#### Some examples for cronus special solutions:

- transverse cubicles and corner cubicles
- free-standing cubicles
- angular wall connections
- parapet panels and cut-outs
- individual engravings
- cut-outs for glass panels in doors and panels
- climb-over protection
- swing doors

## **cronus®** | luminous

### lighting element

In designing sanitary facilities light is used more and more in a variety of applications. The perfect combination of partition walls, light elements, wall panelling and flooring brings about a very special atmosphere in the room. cronus offers the use of indirect light with its specially developed lighting element. It is integrated in the partition panel and can be connected easily.



## **cronus®** | pointing the way

### accessories and engraving

With the extensive stainless steel and nylon accessory programme of KEMMLIT, cronus can be implemented completely and from a single cast. Thief-proof connection and harmonising colours and design. Positioning is already incorporated in the overall planning!



Especially in the HPL surfaces individual engravings can be additionally integrated for better navigation. Visually perfect!

*Details regarding accessories (toilet brush sets, wardrobe hooks, toilet paper roll holders, door stopper hooks, graffiti cleaner, baby changing stations etc.) please see our KEMMLIT accessory programme.*

## **cronus®** | extended

### complementary products

Modesty screens and urinal screens are incorporated more and more in the planning of sanitary and WC facilities. Next to hygiene, privacy is very important in these areas. cronus offers individual solutions for this as well.

Apart from the standard modesty screen (size 435 mm x 825 mm), larger urinal screens with supporting leg (size 435 / 600 mm x 1475 mm incl. 150 mm under-panel clearance) can be realised.

Often modesty screens are specified for frequently used and sheltered areas in public-commercial buildings. Besides the modesty screen with supporting leg (size 600 mm x 2000 / 2135 mm incl. 150 mm under-panel clearance), KEMMLIT also offers a modesty screen with a floor-to-ceiling supporting column (size 800 / 1000 / 1200 mm x 2000 mm incl. 150 mm under-panel clearance).

Special widths and special heights are of course also possible by arrangement with our technicians.

Curtains instead of doors – especially in shower areas – are often realised as well. KEMMLIT offers special curtains from Trevira and Saran – robust and ultra-modern.





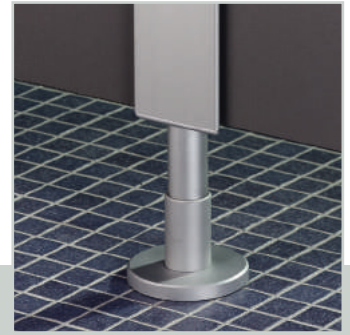
Corner profile for free-standing cubicles



Wall connection profile with rosette for accurate joints



Connection of the profiles with solid M12 screw connection



Aluminium supporting leg in the front panel in a static connection with the profiles

Trend-setting architecture is among other things a matter of technology. During development, particular attention was therefore paid to the connection elements. The high quality aluminium system structure with the aesthetic profiles and linear connections ensure an indestructible and solid cubicle system that is minimalist and flexible.



3-part-edge hinge (3 per door) made of aluminium with integrated spring for self-closing doors



Solid M12 screw connection of the supporting legs in the profiles



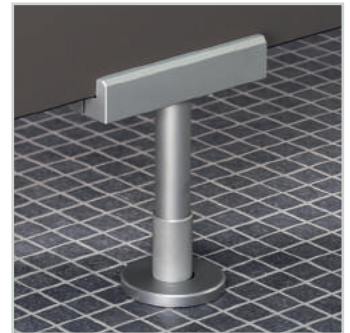
Ergonomic turning knob with integrated red/white indicator



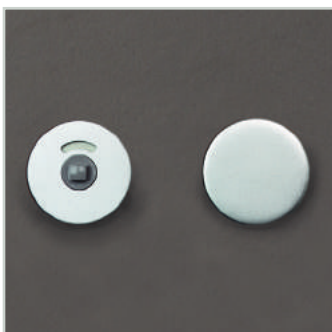
Lock cover plate with integrated turn lock



Finger protection with integrated hinges for cronus NR



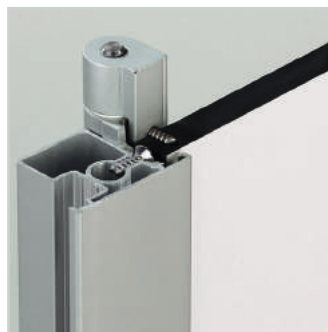
Supporting leg bracket for support-optimised legs in the partition panel



Door knob with parallel positioned red/white indicator



Beautifully shaped lock cover plate with solid zinc die-cast lock



HPL door with door stop profile – hinges screwed hidden from sight



Supporting leg detailed – adjustable height with solid cover sleeve



	<b>cronus NR (wet area)</b>	<b>cronus GL (glass)</b>
<b>cubicle system:</b>	<b>cronus NR (wet area)</b>	<b>cronus GL (glass)</b>
<b>Certified:</b>	TÜV certified, GS tested safety	ditto
<b>Layout:</b>	single cubicles and rows of cubicles for all kind of room layouts – ditto special solutions possible	ditto
<b>Cubicle depth:</b>	1500 mm, special depths possible	ditto
<b>Cubicle height:</b>	2000 mm, alternatively 2135 mm, special heights possible	ditto
<b>Under panel clearance:</b>	Standard 150 mm, adjustable range +25 / -5 mm, special sizes as well as no under panel clearance possible	standard 150 mm, adjustable range +25 / -5 mm, special sizes possible, under panel clearance required
<b>Panels:</b>	13 mm solid grade HPL panels with decorative layer	8 mm enamelled toughened safety glass for partition panels and 12 mm for front and side panels
<b>Doors:</b>	13 mm solid grade HPL panels with decorative layer, alternatively 8 mm toughened safety glass or 30 mm aluminium sandwich construction	8 mm enamelled toughened safety glass with standard lock or with grip hole drilling
<b>Door width:</b>	570 mm / 640 mm / 750 mm / 980 mm (nominal width) special width possible	ditto
<b>Swing door:</b>	13 mm HPL with touch plate and swing hinge – made of stainless steel, size min. W x H 250 x 600 mm, max. W x H 600 x 1400 mm	-
<b>Stabiliser head rail:</b>	3-chamber-profile, size 54 x 43 mm, square shape	ditto
<b>Door stop profile:</b>	solid aluminium profile with continuous rubber buffer (to reduce noise)	ditto
<b>Wall connection:</b>	U-channel for straight and angular wall connection	U-channel for both side and front panel, wall connection special glass angle for partition panels
<b>Upper panel:</b>	13 mm HPL max. 1800 x 650 mm larger panels will be split	12 mm enamelled toughened safety glass span sizes by agreement
<b>Upper glass panel:</b>	aluminium frame with clear toughened safety glass 6mm, alternative plexiglass 5 mm, max. 1800 x 650 mm larger panels will be split	ditto
<b>Support-optimised cubicles:</b>	for niche or corner cubicles, up to a front panel width or axis of the partition wall of max. 250 mm and height of 2000 or 2135 mm incl. 150 mm under panel clearance	ditto
<b>Suspended cubicles:</b>	suspended head rail system made of aluminium, head rail 50 x 150 mm (max. length without stabilising column 3600 mm) alternative head rail 50 x 200 mm (max. length without stabilising column 4500 mm)	-
<b>Supporting legs:</b>	legs screwed or siliconed to floor, adjustable height, made of aluminium with aluminium or nylon cover sleeve, alternatively made of stainless steel	legs screwed or siliconed to floor, adjustable height, made of aluminium with aluminium cover sleeve, alternatively made of stainless steel
<b>Hinges:</b>	3-part-edge hinge made of aluminium (Ø 20 mm), cannot be unhinged, with integrated spring optionally for automatic closing or opening of the door, 3 nos. per door, available with finger protection	ditto  3 nos. per door, without finger protection
<b>Finger protection:</b>	aluminium-safety-tube on the hinge side	-
<b>Furniture:</b>	Single latch turning knob or door knob with and without red / white indicator, alternatively provided for profile cylinder, made of aluminium or nylon	Single latch turning knob or door knob with and without red / white indicator, alternatively provided for profile cylinder, satin anodised aluminium or grip hole (Ø 55 mm)
<b>Central locking system:</b>	door knob with central locking system either above or underneath cubicle bench seating	-
<b>Cut-outs with glass:</b>	toughened safety glass 5 mm in a variety of sizes and shapes, integrated in doors and panels	non-printed, transparent surfaces in a variety of sizes and shapes, integrated in doors and panels and shapes, integrated in doors and panels
<b>Engravings:</b>	a range of standard symbols, numbers and words, individual graphics are possible	-
<b>Cut-outs:</b>	individual parapet panels as well as cut-outs are possible	individual cut-outs are possible
<b>Curtain rail:</b>	slide bar made of satin anodised aluminium (fitted in itto stabiliser head rail), shower curtain slider made of white plastic and curtain hooks made of stainless steel	ditto
<b>Lighting element:</b>	length to match individual cubicle size, fluorescent tube 1225 mm long (230V / 36 Watt), alternative 923 mm long (230V / 30 Watt), with plexiglass cover plate	ditto
<b>Climb-over protection:</b>	aluminium tubes satin anodised to prevent climbing over, max. cubicle depth 1600 mm	ditto
<b>Anteroom separation:</b>	separation with one door, height 2000 mm, alternative 2135 mm, without under panel clearance and with upper panel up to 650 mm, special heights are possible	separation with one door, height 2000 mm, alternative 2135 mm incl. under panel clearance special heights and upper panels are possible

**Panels and doors:**

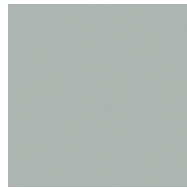
**HPL:**



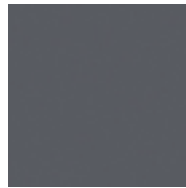
crystal white 9108



granite white 9108P



light grey 7208



quartz grey 7708



graphite 7808



silver 7408



sahara yellow 1608



corn yellow 1708



citrus orange 2515



tornado red 3508



garnet red 3708



pacific blue 5715



lagoon blue 5408



lemon green 6715



spring green 6815

**Toughened safety glass:**



white 9095



pale grey 7095



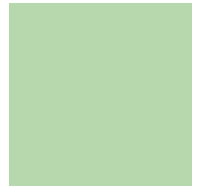
anthracite 7603



dark blue 5603



light blue 5203



white green 6504



white yellow 1503



light yellow 1403



pale red 3303



poppy 3195



dark red 3603



structure SR 200\*

**Profiles, hinges, furniture, supporting legs and accessories:**



white  
02



manhattan  
05



anthracite  
03



dark blue  
04



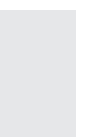
yellow  
10



red  
11



dark red  
01



satin<sup>3)</sup>  
anodised 08



stainless<sup>1)</sup>  
steel 12



black<sup>2) 3)</sup>  
anodised 17

1) supporting legs and accessories 2) profiles only 3) cronus glass satin anodised only \*patterned glass, translucent  
Due to typographic reasons, the colours shown may slightly differ from the original colour.

Please contact your personal KEMMLIT sales representative to explore the creative possibilities of cronus. He will be glad to advise you about all the available technical solutions and details!

Tel. + 49 (0) 70 72 / 131-0

Fax + 49 (0) 70 72 / 131-150

info@kemmlit.com



## KEMMLIT® | ten good reasons

1. 125 years of experience and market leadership
2. Extensive product range
3. Product innovation with top design
4. Top quality in terms of material and processing
5. Harmonising solutions
6. Individual consulting service by professional sales representatives
7. Quick quotation processing
8. Prompt and on-schedule delivery
9. Professional installation on site
10. One-stop service

For further information visit our website at [www.kemmlit.com](http://www.kemmlit.com)

**Individual  
sanitary fittings  
by KEMMLIT®**

For example:

Changing cubicles  
Toilet cubicles  
Shower cubicles  
Locker systems  
Vanity units  
Shelving  
Bench seating  
Baby changing  
stations  
Doors and frames

**KEMMLIT-  
Bauelemente GmbH**

Maltschachstraße 37  
D-72144 Dusslingen

Tel.: +49 (0) 7072 /1 31-0

[www.kemmlit.com](http://www.kemmlit.com)  
[info@kemmlit.com](mailto:info@kemmlit.com)

