

BASIC | WC-cubicles





BASIC | One programme - many advantages

Overview:

One programme - many advantages	Page 3
C-BASIC type	Page 4
D-BASIC type	Page 6
E-BASIC type	Page 8
Planning aid	Page 10
Complementary products	Page 10
Colour concept	Page 11
KEMMLIT – ten good reasons	Page 11

■ Economic decision.

Benefit from the price advantage of a straightforward and sophisticated system without loss of quality, high-class appearance and individual solutions - it pays.

■ Top quality and top design.

KEMMLIT's BASIC WC cubicles offer robust as well as visually pleasing solutions for almost any situation.

■ Sophisticated construction.

Tested materials and decades of experience in development guarantee maximum stability and durability.

■ TÜV and GS certified.

Independent experts certify the outstanding safety and functionality of our Basic range.

■ Customised and on-time delivery.

Whether for wet or dry areas – BASIC offers suitable WC cubicles exactly when you need them.

■ Focus on to the essentials.

The BASIC cubicle system consists of

- 3 types of cubicles
- 9 colours
- 4 door widths
- 2 heights
- countless layout solutions

■ One-stop solution.

From free consulting to professional installation, KEMMLIT stands for reliable and competent service.

■ The competent partner.

As market leader, we combine both tradition and innovation. With KEMMLIT, you are in safe hands.



BASIC Typ C | the extremely sturdy WC cubicle made of HPL



Type C-BASIC is ideal for both wet and dry areas with high stability, durability and hygiene requirements.

The unique static interconnection of aluminium sections as well as the high-quality fittings are characteristic for this system. The headrail consists of an extremely sturdy three-chamber stabiliser. All screw connections are solid. This guarantees continuous and trouble-free performance.

Panels and doors are made of 13 mm, water-resistant, solid grade laminate HPL panels with machine-milled edges. The panels are therefore scratch-, wear- and abrasion-resistant.

The aluminium supporting legs with stainless steel core have a solid nylon cover sleeve and a height-adjustable mechanism to compensate for tolerances in floor level of up to 30 mm.

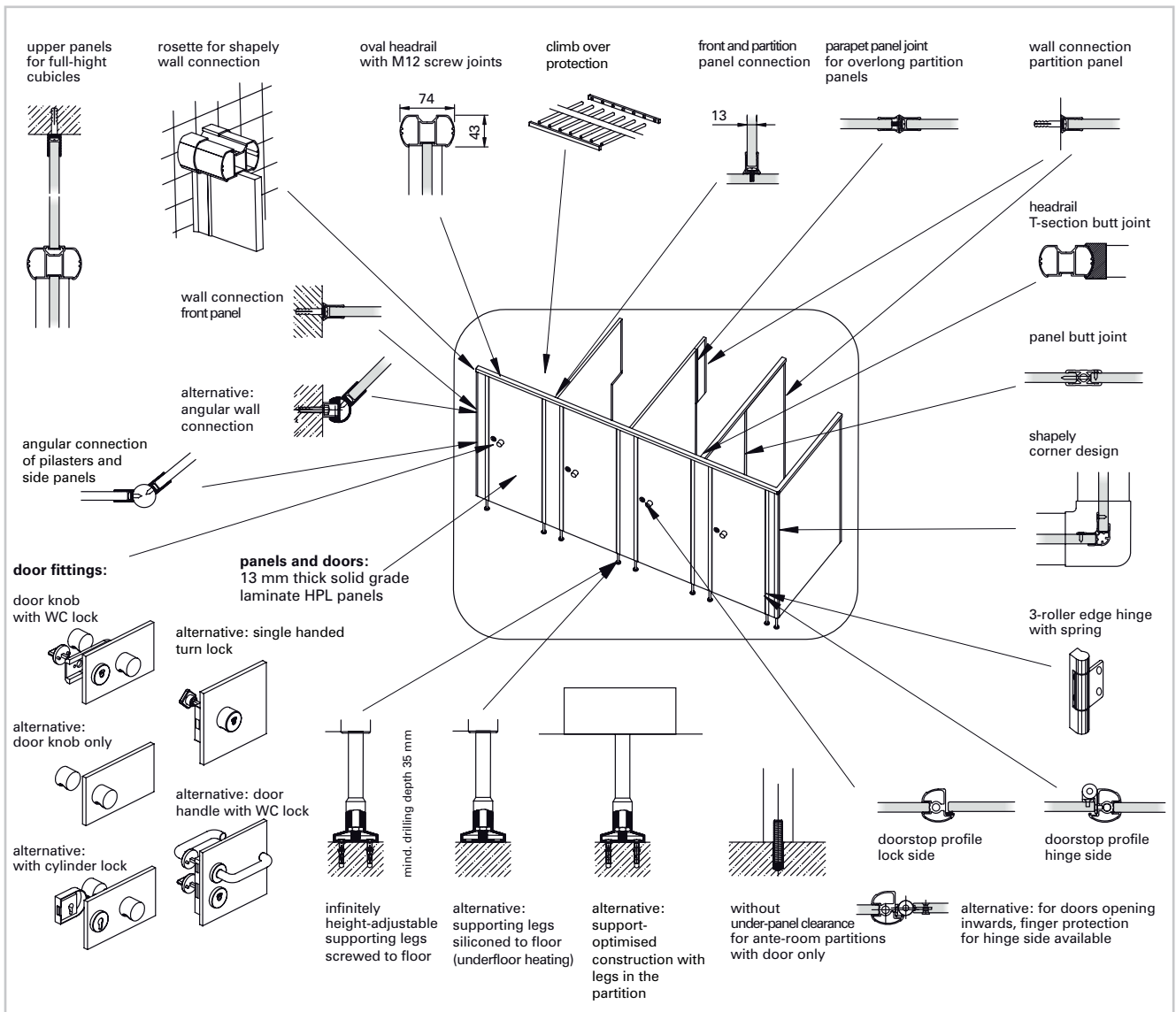
The milled from the solid aluminium lock cover plate with sturdy zinc diecast lock is user-friendly and prevents material fatigue.

The sturdy three-roller edge hinges made of aluminium feature maintenance-free bearing bushes and are screwed hidden from sight to the face of the panel. Also available with finger protection!

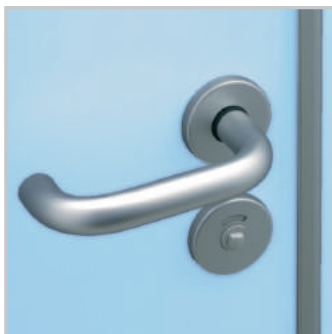
All doors can be installed either with automatic closing or opening. End-to-end rubber buffers in the doorstop profiles ensure quiet closing.

Areas of application

- schools
- universities
- industrial buildings
- administration buildings
- hospitals
- sports- and leisure centres
- camp sites
- hotels
- restaurants
- public facilities



BASIC Typ D | the low-cost WC cubicle made of resin coated particle board



Type D-BASIC is the low-cost solution for dry areas where quality, stability and harmonising design are essential.

Panels and doors are made of 30 mm sturdy, formaldehyde-free, high-density melamine resin-coated particle board. The surface of the panels consists of directly applied melamine resin coating. The edges have a protective 3 mm ABS lipping.

All profiles are made of high-quality aluminium. The furniture is shapely integrated into doors and panels. The warp-resistant headrail, available either in oval or rectangular design, guarantees long-lasting stability.

Specially developed for high requirements, the 2-roller edge hinges made of aluminium feature a maintenance-free bearing bush.

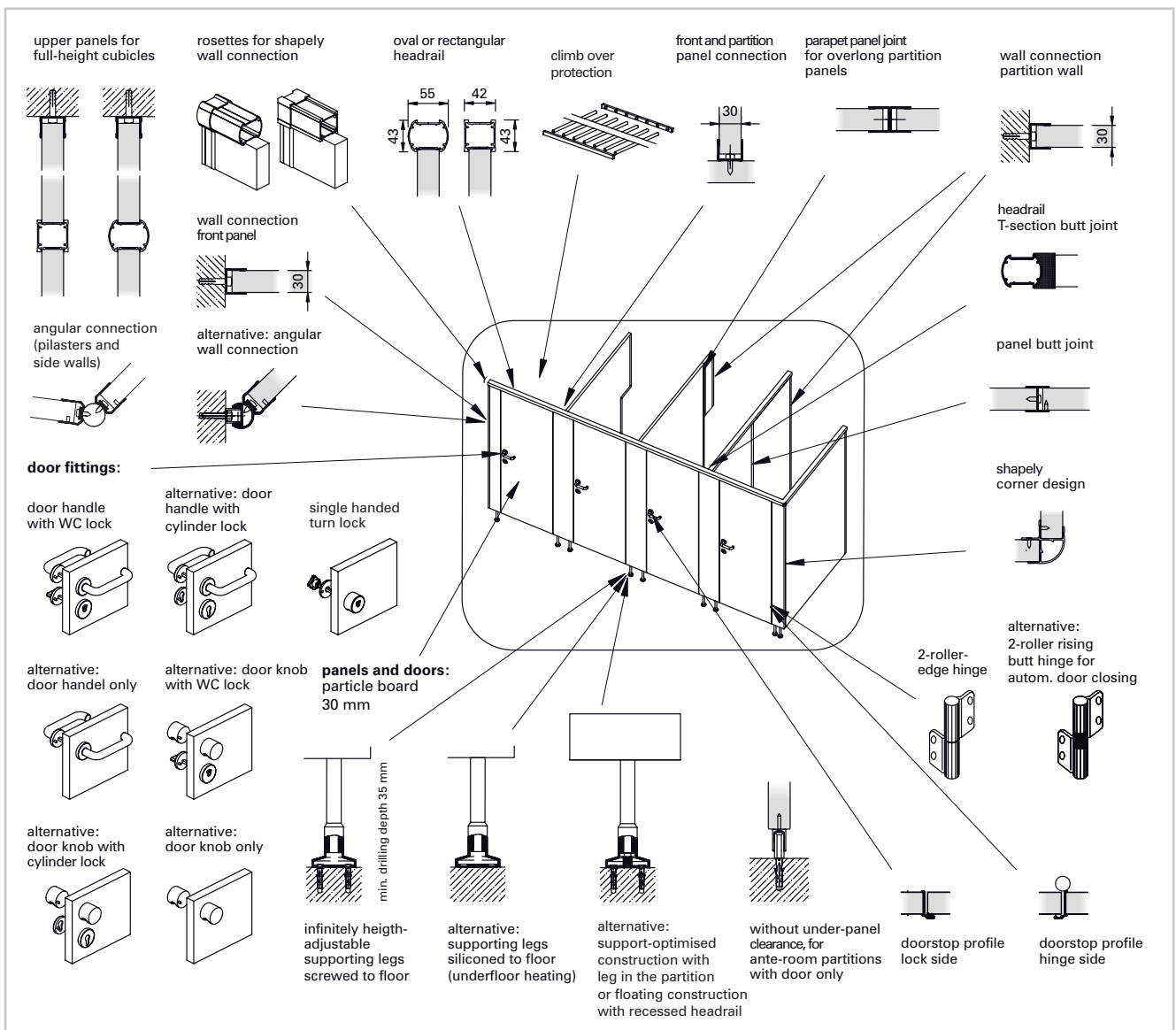
The beautifully designed door handles made of impact resistant nylon with metal core, or alternatively aluminium, with WC lock and metal bolt are extremely robust. As an option, door knobs with hinges for automatic door closing can be installed.

The supporting legs have a solid cover sleeve and are infinitely height-adjustable to compensate for tolerances in floor level of up to 30 mm. The supporting legs are available either completely made of stainless steel, or satin anodised aluminium with flat cover sleeve or with nylon cover sleeve.

Harmonising colours for panels, profiles, hinges, fittings, supporting legs and accessories round off the visual impact of the cubicles.

Areas of application:

- industrial buildings
- administration buildings
- restaurants
- hotels
- public facilities
- schools



BASIC Typ E | the elegant WC cubicle made of steel sheet composite elements



Type E-BASIC is an aesthetically beautiful cubicle system for both wet and dry areas. Panels and doors consist of 30 mm sheet steel composite elements.

This specially developed construction combined with the core inlay ensures extrem robustness and rigidity. This guarantees long life expectancy.

The exceedingly sturdy steel-sheets with material thickness of 0,6 mm have very good corrosion protection. Both sides are hot-dip galvanized and have an additional special protective coating on the inside. The outside is protected by a sturdy polyester coating thus ensuring immaculately hygienic cleaning.



All profiles are made of high-quality aluminium. The furniture is beautifully integrated into doors and panels. The warp-resistant headrail, available either in oval or rectangular design, guarantees long-lasting stability.

2-roller rising butt hinges with maintenance-free bearing bush are ideally suited for either automatic closing or opening of the doors.

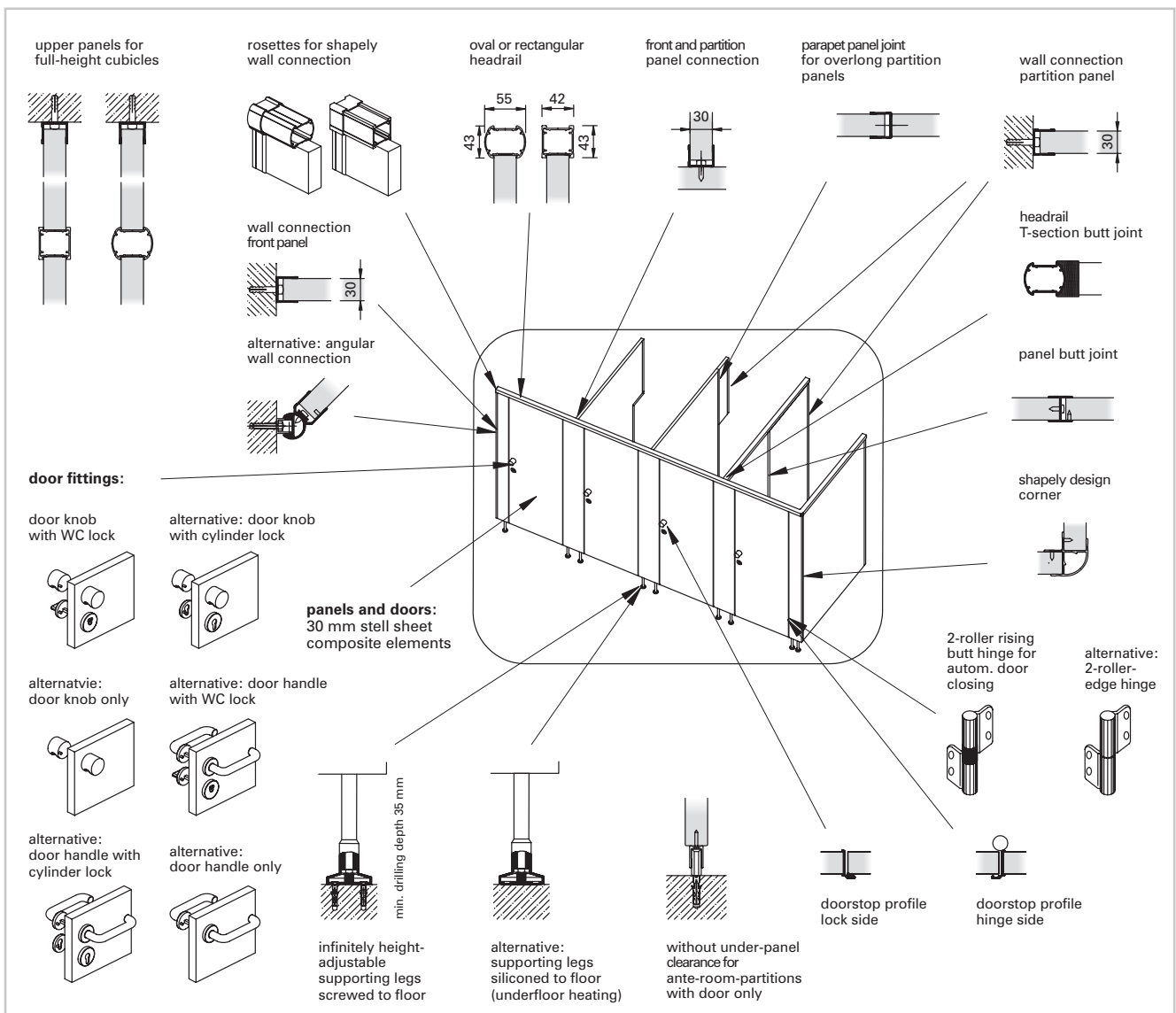
The door knobs made of impact resistant nylon or alternatively aluminium with WC-lock and metal bolt are extremely sturdy. As an option, door handles are available.

All supporting legs are infinitely height-adjustable to compensate for deviations in floor level of up to 30 mm. All constructive components are made of corrosion-free aluminium or rust-proof stainless steel.



Areas of application

- universities
- industrial buildings
- administratio buildings
- hospitals
- camp sites
- hotels
- restaurants
- public facilities



BASIC | planning aid

Approval mark: TÜV-approved, GS tested safety

Cubicle height: 2000 mm panels and doors,
alternative 2135 mm

Upper panel: max. 2650 mm room height

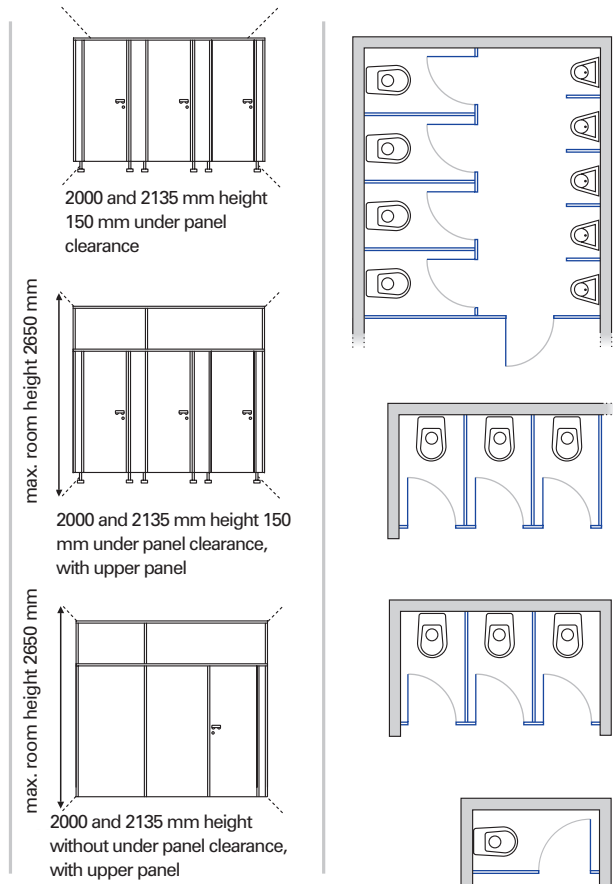
Under-panel: 150 mm,
adjustable +25 / -5 mm,

Door width: 570 mm
(nominal size) type C 640, type E 620, type D 650
750 mm
980 mm

Cubicle depth: up to 2000 mm, standard 1500 mm
(from 1601 mm with leg and butt
joint connection in the partition)

Plan view: range of cubicles or diagonal
cubicles (see drawing)

Anteroom without under-panel clearance,
dividing cubicle height: 2000 mm
with upper panel up to 2650 mm



Please refer to our representative in your vicinity for specification sheets or visit our website at www.kemmlit.com

BASIC | complementary products

Urinal screens: standard urinal screen 435 mm x 825 mm
with supporting leg 435/ 600 mm x
1475 mm including 150 mm under-
panel clearance



Modesty screens: with supporting leg 600 mm x 2000 mm
including 150 mm under-panel clearance

with supporting leg and supporting
column 800/1000/1200 mm x 2000 mm
including 150 mm under-panel clearance



Accessories: extensive range in stainless steel,
aluminium and nylon in different colours.
Harmonising design and theft-proof
screw connections.

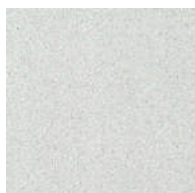
For details regarding accessories (brush sets, coat hooks, paper roll holder, graffiti-cleaner, baby changing stations etc.), see our brochure KEMMLIT accessory programme.

BASIC | colour concept

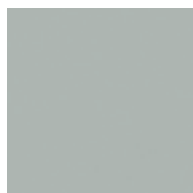
Panels and doors-HPL/particle board:



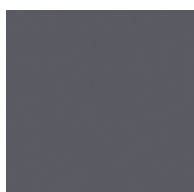
Crystal white 9108



Granite white 9108P



Light grey 7208



Quartz grey 7708



Graphite 7808



Lagoon blue 5408



Tornado red 3508



Sahara yellow 1608



Spring green 6815

¹⁾ surcharge for furniture and legs ²⁾ surcharge

Panels and doors steel sheet material:



Pure white 9213



Grey 7013

Profiles, hinges, furniture, ABS-lipping, supporting legs and accessories:



White 02



Dark blue 04



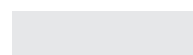
Manhattan 05



Yellow 10



Anthracite 03



Satin anodised 08¹⁾
(Profiles, hinges, furniture, accessories)



Red 11



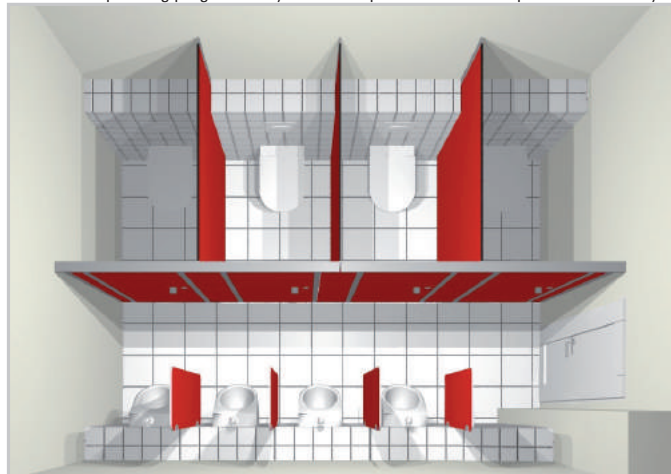
Stainless steel V2A 12²⁾
(only legs and accessories)

The above shown colors only apply to products from the KEMMLIT BASIC range and may differ slightly from the original colour due to typographic reasons. Special colours are available on request.

KEMMLIT® | ten good reasons

1. 125 years of experience and market leadership
2. extensive product range
3. product innovation with top design
4. top quality in terms of material and processing
5. harmonising solutions
6. individual consulting service by professional sales representatives
7. quick quotation processing
8. prompt and on-schedule delivery
9. professional installation on site
10. one-stop service

KEMMLIT 3D planning programme - your sales representative will be pleased to advise you!



Further information:



www.kemmlit.com

**Individual
sanitary fittings
by KEMMLIT®**

For example:

Changing cubicles
Toilet cubicles
Shower cubicles
Locker systems
Vanity units
Bench seating
Baby changing stations
Accessories

**KEMMLIT-
Bauelemente GmbH**

Maltschachstraße 37
D-72144 Dusslingen

Germany

Tel.: +49 (0) 7072 /1 31-0
Fax: +49 (0) 7072 /1 31-150

www.kemmlit.com
info@kemmlit.com

